

myip.php

```
<?php  
echo $_SERVER['REMOTE_ADDR'];  
echo "";  
?>
```

Struktur Data Tabel CheckIn Pada Database CheckMyIP

#	Name	Type	Collation	Attributes	Null	Default	Extra	Action
<input type="checkbox"/>	1 date_in	varchar(20)	latin1_swedish_ci		Yes	NULL		Change Drop Primary More
<input type="checkbox"/>	2 ip_address	varchar(16)	latin1_swedish_ci		Yes	NULL		Change Drop Primary More
<input type="checkbox"/>	3 host_name	varchar(20)	latin1_swedish_ci		Yes	NULL		Change Drop Primary More

Tampilan desain form



CheckMyIP.vb

‘ Sertakan Timer untuk memberikan waktu jeda sekitar 10 detik

```
Imports System.Net
```

```
Imports System.Text.RegularExpressions
```

```
Imports MySql.Data.MySqlClient
```

```
Public Class Form1
```

```
Private TimeStart, TimeStop As Date
```

```
Private Sub Form1_Load(ByVal sender As System.Object, ByVal e As System.EventArgs) Handles
```

```
MyBase.Load
```

```
TimeStart = Now
```

```
Timer1.Interval = 200
```

```
Timer1.Start()
```

```
End Sub
```

```
Private Sub CheckIP()
```

```
LblIP.Text = GetExternallp()
```

```
Me.Text = If(LblIP.Text = "", "No internet connection", LblIP.Text)
```

```
LblHost.Text = System.Net.Dns.GetHostName()
```

```
End Sub
```

Private Function GetExternallp() As String

```
Try
    Dim ExternallIP As String
    ExternallIP = (New WebClient()).DownloadString("http://your.server.com/myip.php")
    Return ExternallIP
Catch
    Return Nothing
End Try
End Function
```

Private Sub WriteMySQL()

```
Dim con As MySqlConnection = _
    New MySqlConnection("Data Source=your.server.com;Database=CheckMyIP;_
                        User ID=check;Password=check;")
Dim sql As MySqlCommand = New MySqlCommand("SELECT * FROM checkin", con)
LblDate.Text = Format(DateTime.Now, "yyyy.MM.dd HH:mm:ss")
Dim ds As DataSet = New DataSet()
```

```
Dim DataAdapter1 As MySqlDataAdapter = New MySqlDataAdapter()
Dim Query As String
```

```
Query = "INSERT INTO checkin(date_in,ip_address, host_name)VALUES("
Query = Query + """" + LblDate.Text + """, "" + LblIP.Text + """, "" + LblHost.Text + """)"
con.Open()
TxtStatus.Text = Query
Dim cmd As MySqlCommand = New MySqlCommand(Query, con)
```

```
Dim i As Integer = cmd.ExecuteNonQuery()
If (i > 0) Then
    TxtStatus.Text = "Process succeed"
Else
    TxtStatus.Text = "Process failed"
End If
con.Close()
```

End Sub

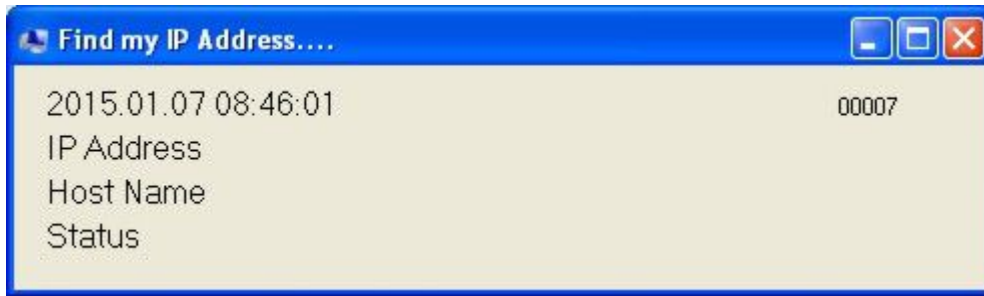
Private Sub Timer1_Tick(ByVal sender As System.Object, ByVal e As System.EventArgs) _ Handles Timer1.Tick

```
TimeStop = Now
Dim TimeElapse As TimeSpan = TimeStop.Subtract(TimeStart)
LblElapse.Text = TimeElapse.TotalSeconds.ToString("00000")
LblDate.Text = Format(DateTime.Now, "yyyy.MM.dd HH:mm:ss")
If Val(LblElapse.Text) = 10 Then
    CheckIP()
    If LblIP.Text <> "" Then
        WriteMySQL()
        System.IO.File.Create(LblIP.Text & ".txt").Dispose()
    Else
        TxtStatus.Text = "No IP found"
```

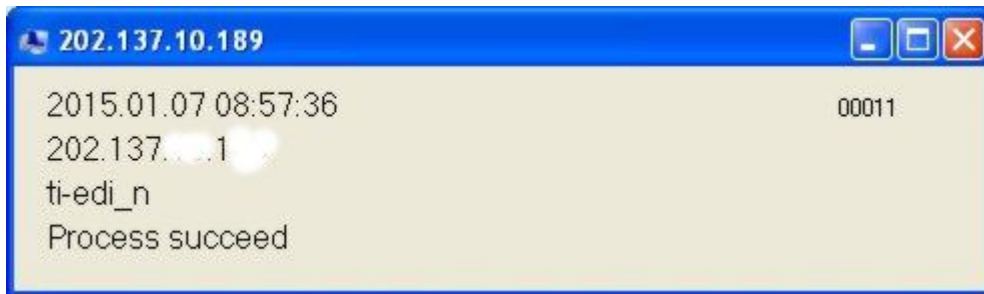
```
End If  
Me.Close()  
End If  
End Sub
```

End Class

Tampilan layar saat menunggu timer sampai 10 detik



Tampilan layar setelah proses mengakses server dan merekam data IP



Hasil yang terekam di server

date_in	ip_address	host_name
2014.12.12 20:24:43	139.195.24.229	turi-PC
2014.12.15 09:26:10	139.192.176.58	turi-PC
2014.12.16 12:11:20	139.194.75.132	turi-PC
2014.12.17 13:22:28	139.194.75.134	turi-PC
2014.12.18 11:20:11	139.194.75.134	turi-PC
2014.12.19 12:46:55	139.192.176.100	turi-PC
2014.12.21 15:20:26	139.195.23.41	turi-PC
2014.12.21 22:47:52	139.192.187.158	turi-PC
2014.12.21 23:28:44	139.192.187.158	turi-PC
2014.12.22 10:12:47	139.192.187.158	turi-PC
2014.12.23 14:13:20	139.0.70.83	turi-PC
2014.12.24 10:38:47	139.0.70.83	turi-PC
2014.12.26 09:47:38	139.195.24.239	turi-PC